



AUTODESK.

DELVE

BEST DESIGN OVERALL

COLLEGE OF SAN MATEO

Muti Shuman, James George,
Mhd Fadi Almousli

For their team's design presented in the Spring 2021 design competition hosted by Autodesk and Delve, in conjunction with College of San Mateo, Laney College, Los Angeles Pierce College, and San Jose State University.

Di Jin, Account Manager at Autodesk Education Experiences

College of San Mateo



los angeles
Pierce COLLEGE

SJSU SAN JOSÉ STATE
UNIVERSITY



TEAM M.J.M

JAR OPENER

Muti Shuman | James George | Mhd Fadi Almousli



AUTODESK

DELVE





User Experience

Streamlined for Everyday Use
Solves All User Needs



Safety

No Risk of Injury or Misuse
Child Friendly



Intuitive

Fast and Easy Installation
Use at a Glance



Versatility

Jars, Bottles & More
Marketable to Everyone



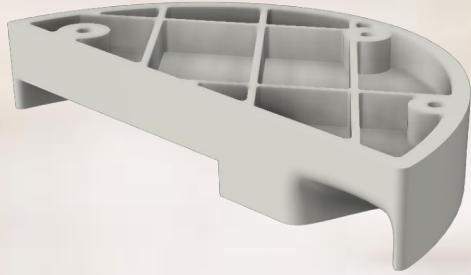
Cost-Effective

Commercially Viable
Simple to Manufacture

Our Design



Additional Features



Ease of Use

With only a simple twist our product can open any lid.

Sizes

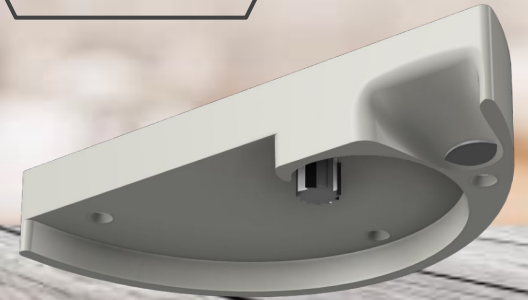
Our product opens all sizes and includes a bottle opener.

Installation

Install the product with one hand, using included double sided pads and mounting screws. Small footprint.

Safety

Our design is child friendly, with no sharp edges. Highly controlled and comfortable.





THANK YOU

Muti Shuman | James George | Mhd Fadi Almousli



AUTODESK.

DELVE

James George - jamesgeorge@my.smccd.edu

Muti Shuman - mutishuman@my.smccd.edu

Mhd fadi Almousli - mhdfadimhdfadialm@my.smccd.edu

